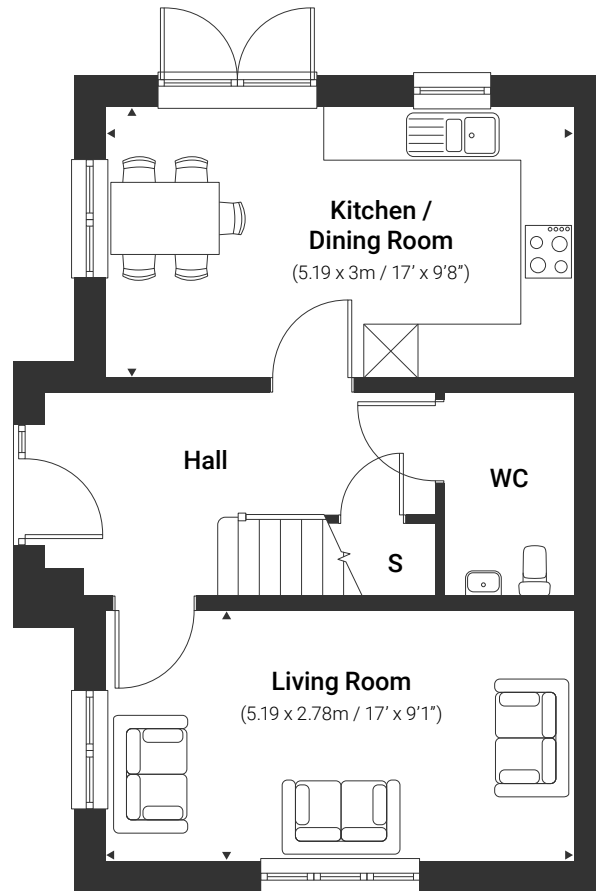


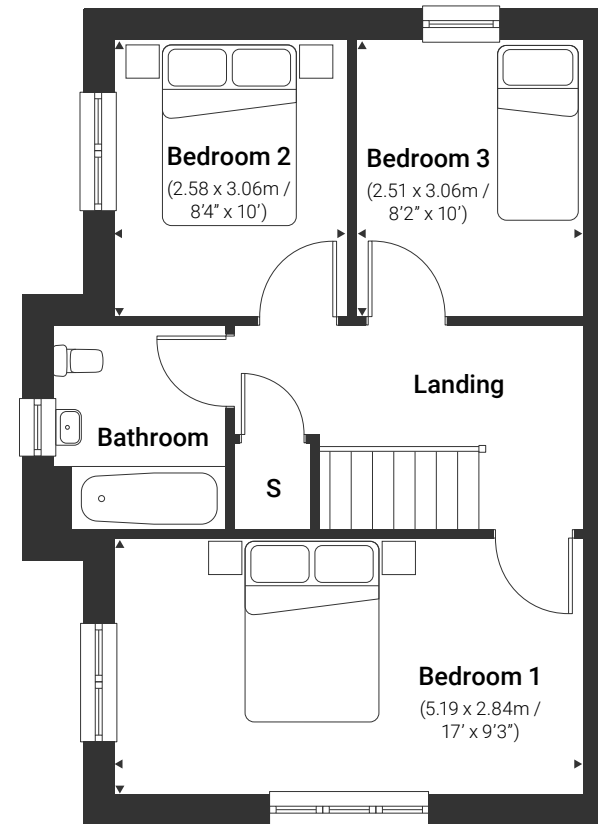
3 bedroom house

Eagle | The Meadows – Keresley

934 sq.ft / 86.77 sq.m
Parking | Unfurnished



Ground



First

These particulars were prepared from preliminary plans and specifications before the completion of the properties and are intended only as a guide. They may have been changed during construction and final finishes could vary. The dimensions are taken from the indicated points of measurement for guidance only and are an approximation. Images are indicative only.

S – Store

WC – Toilet

Rental living by

